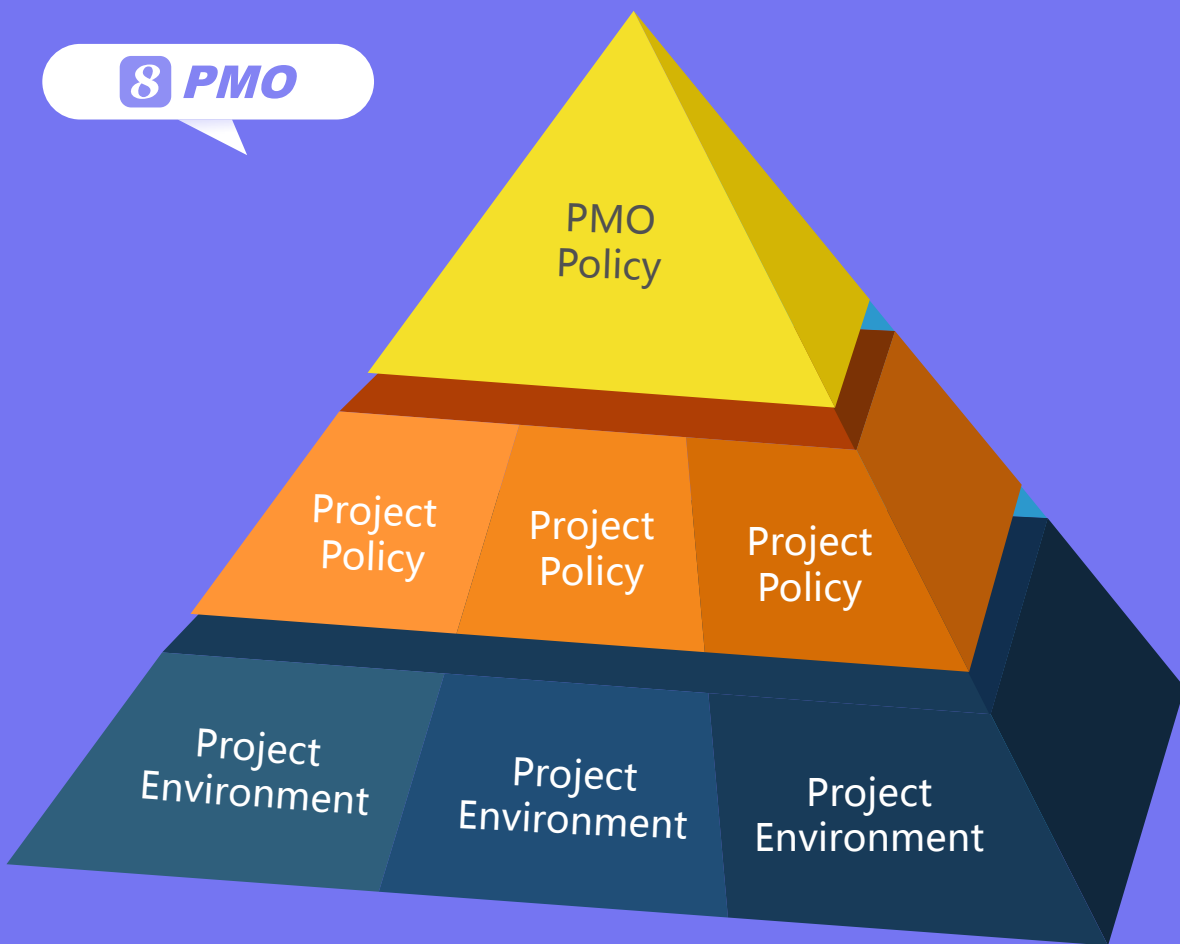




## High Performance PMO

Project portfolio and project strategy management, management of objectives, collaboration, etc.



## High Performance PMO

8 PMO is for portfolio & program management.

8 allows the PMO manager to effectively manage goals, collaborations, commitments and investments in a goal-oriented multi-project environment.

8 PMO can aggregate information from individual projects to it in real-time.



## 1. Governance & Policies

A PMO often needs to enforce certain policies and rules in order to make its monitoring and control across multiple projects effective. **8** is a policy-driven system which allows selective policy enforcement in project planning and execution and it offers a rich set of configurable policies and controls for the following areas and these policies and controls can be structured according to enterprise-level, program-level and project-level requirements:

- Goals & critical success factors
- Outstanding issue control
- cope control & phase measure
- Change control
- Time & resource control
- Procurement control
- Cost classification & control
- Earned value measure
- Review & acceptance process
- Communication, alert & escalation rules
- Quality control

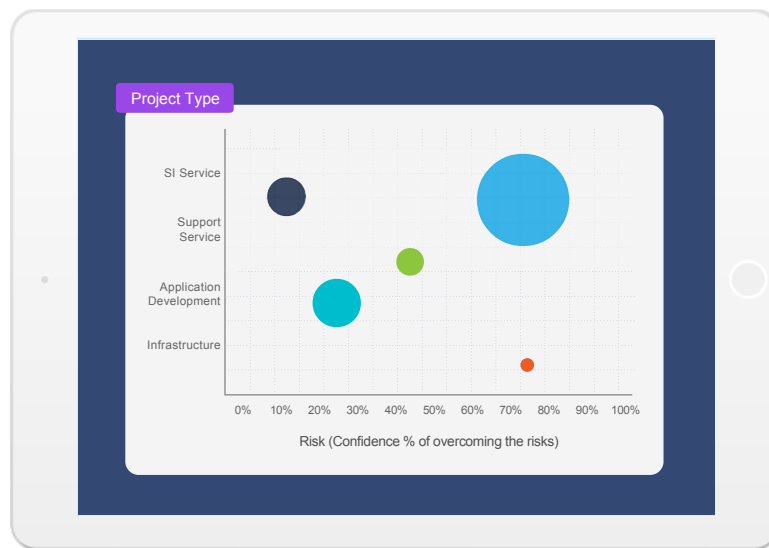
Besides providing the effective policy mechanism for measurement and control, **8** also provides anonymous [Reality Check](#) to find out people's perception of the healthiness of the program or project and collect useful information for maintaining the healthiness of the program or project.

## 2. Project Request & Prioritization

Multi-project or program management will become more predictable if project requests and prioritization are properly managed. 8 provides the **Project Request** feature to allow the requesting party and the responsible committee to properly communicate, investigate and assess cost-benefit, risk and impact before doing the final prioritization.



Since prioritization needs multidimensional assessments from cost-benefit, key resource availability and risk management points of view, 8 provides the **Investment Attention** functionality to allow the management team to look at new project requests and existing projects as the big picture to make proper assessments, trade-offs and prioritization.



After the new project requests have been approved and become official projects, **Investment Attention** can also continue monitoring planned schedule vs. actual progress, risks and planned ROI vs. actual ROI.

### 3. Multi-project Structured Collaboration



The project and program-oriented collaboration capability can make the success or failure difference for multi-project or program management. 8 provides the foundation for individual and group coordination and interaction and its major project and program-oriented collaboration functions are described as follows:

- Functional, project and program-oriented organization management
- Common language for request, commit, deliver and accept for project and program deliverables
- Group, committee and site coordination and management
- Client, partner and supplier coordination and management
- Inter-organization interaction and escalation management

8's [Project and Program-oriented Collaboration](#) functionality combined with its [Accountability & Clear Result](#) management capability will create high performance program management capability for your organization.



## 4. Multi-Project Scope & Requirements Management

8 centralizes scope & requirements management in program-level and also project-level and provides [Requirements Request](#) to capture, filter, clarify and validate requirements and [Requirements Matrix](#) to organize requirements and track their progress from start to completion. Project level requirements information is automatically aggregated to the program level in real-time.



8 [Reality Check](#) facility can be used to detect scope communication issues and requirements instability issues at program-level or project-level. Requirements review and acceptance are automatically tracked and requirements changes must go through the strict change control process. 8 also provides [Real-time Display Components](#) for analyzing and displaying requirements management information.

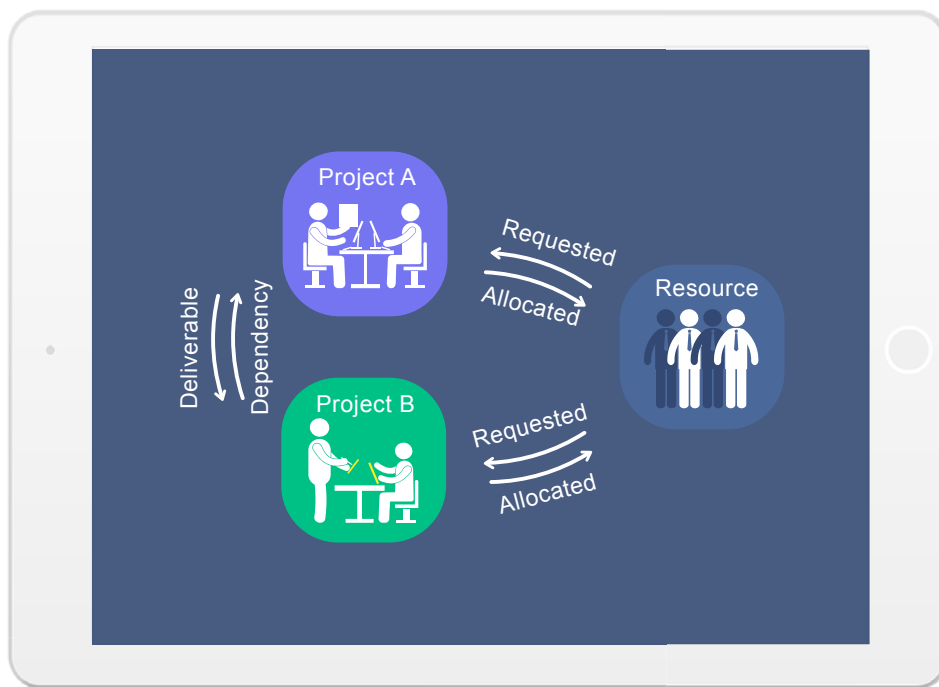
## 5. Multi-Project Time Management

8 automatically tracks time and progress for each project activity and deliverable. The % of completion of lower level activities and deliverables are automatically aggregated up to the higher level activities, project and program. Overdue activities and deliverables are flagged and alert messages will be sent to the affected stakeholders.

8Manage My Workbench Enterprise Bussiness Admin Time Management					
WBS	Start		Finish		Status
	Planned	Actual	Planned	Actual	
Requirements	2021 Jul 12	2021 Jul 12	2021 Nov 30	2021 Nov 30	Finished
Design	2021 Dec 05	2021 Dec 01	2022 Mar 10	2022 Mar 08	Finished
Construction	2022 Mar 15	2022 Mar 10	2022 Dec 28		Not Yet Due
Front End	2022 Mar 15	2022 Mar 10	2022 Sep 17		Overdue
Back End	2022 Apr 30	2022 Apr 30	2022 Dec 28		Not Yet Due
Testing	2022 Dec 31		2023 Jun 20		Not Yet Due
Acceptance	2023 Jun 24		2023 Jun 30		Not Yet Due

8 always keeps track of original scheduled time, latest scheduled time and actual completion time and highlights the discrepancies. 8 can also keep track of multiple baselines (versions) of the project plan.

## 6. Multi-Project Dependency Management

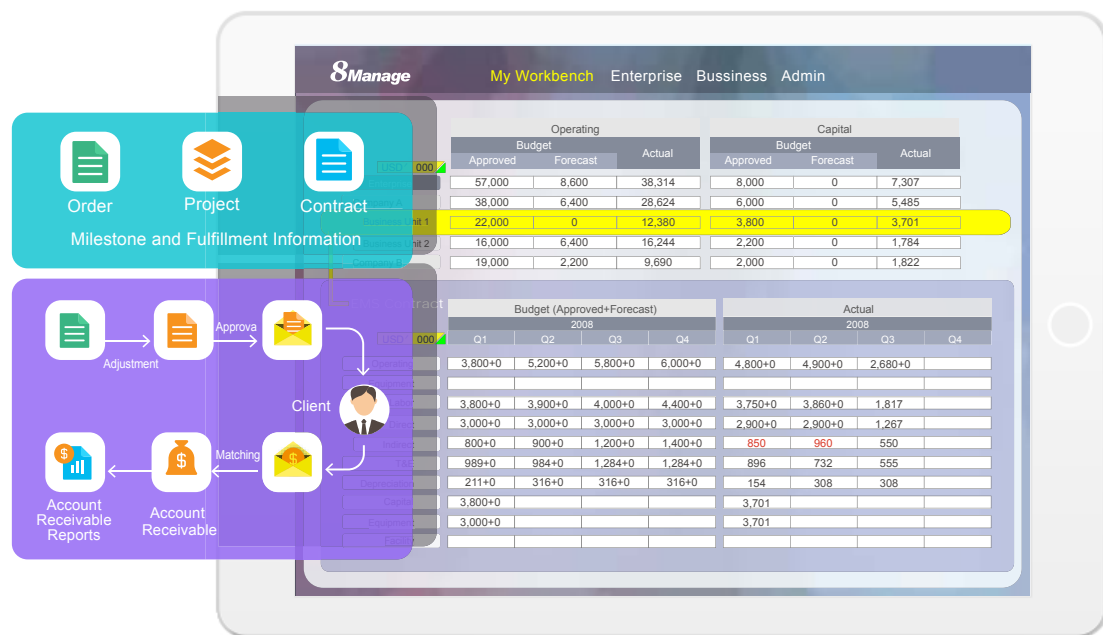


8 supports **mandatory and discretionary** dependency and tracking in project and program levels. It also supports dependency and tracking on key resources and shared resources in project and program levels. For each activity or deliverable, 8 tracks all its direct and indirect dependencies. The dependency icon will turn red when the dependency falls behind the predefined tolerance limit.

8 also supports **dependent (others depending on me)** tracking to ensure the responsible person of each deliverable would understand its change impact to others.

## 7. Multi-Project Cost Management

8 provides the comprehensive revenue & cost budgeting & tracking functionality at activity, project and program levels and the full traceability of project revenues with sales orders and contracts and project costs with timesheets, expenses, PO, invoices and payments.



8 provides the following project and program accounting functionality:

- Program-defined cost classifications linking to COA
- Automatic labor cost calculation based on timesheets
- Automatic procurement cost calculation based on PO & contracts
- Automatic expense calculations based on expense reports
- Automatic checking supplier invoices against PR and PO
- Invoice aging and overdue management
- Invoice and payment linkage
- Budget variance detection and reforecast
- Real-time linkage of project cost to program cost



## 8. Multi-project Quality Management

Dashboard :  ▼

5 Projects found

	Schedule	Cost	Quality & Control	
OEMS Re-engineering	●	●	●	<a href="#">View Status Summary &gt;&gt;</a>
OEMS FE AP Adaptation	●	●	●	<a href="#">View Status Summary &gt;&gt;</a>
OEMS FE Pan-Europe Adaptation	●	●	●	<a href="#">View Status Summary &gt;&gt;</a>
OEMS FE USA Adaptation	●	●	●	<a href="#">View Status Summary &gt;&gt;</a>
OEMS FE Worldwide Rollout	●	●	●	<a href="#">View Status Summary &gt;&gt;</a>

Not Yet Planned  
  Planned or Partially Planned, but Yet Started  
  Progressing  
  May Need Attention  
  Definitely Need Attention

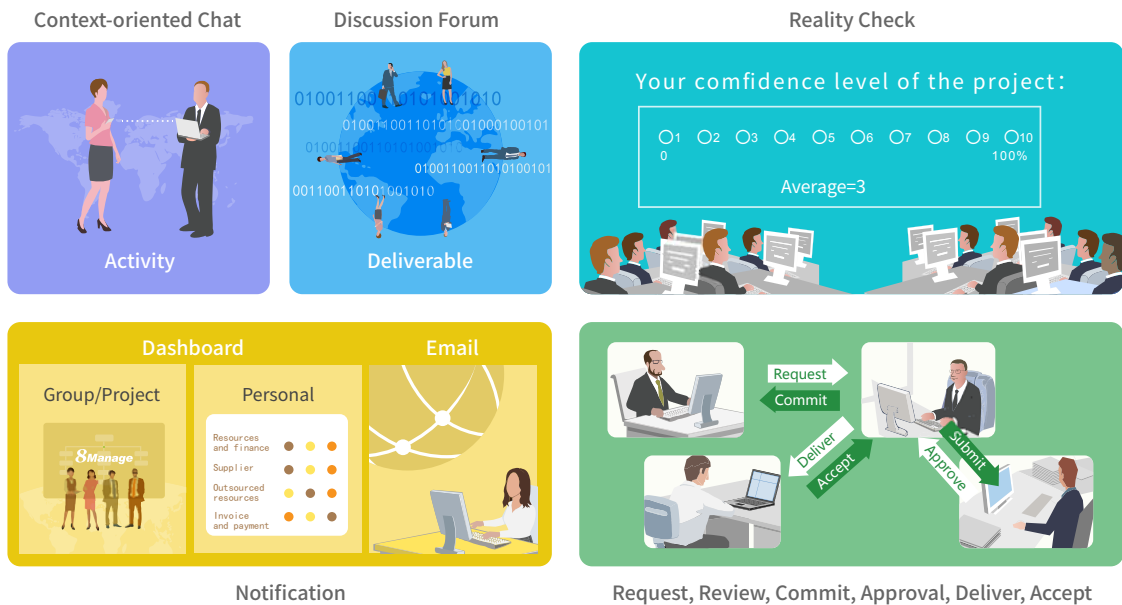
8 provides [Quality Metrics](#) to allow the project manager to set measurement targets and gauge the incremental and final deliverable qualities. 8 also allows the program managers to set different policies for her program to enforce [Review & Approval](#) for controlling qualities during deliverable creation and finalization in the projects under the program.

8 [Reality Check](#) can be used to detect process issues and deliverable quality issues and Real-time Dashboards can be used to disseminate [Quality Metrics, Review & Approval and Reality Check](#) information effectively at real-time so that quality problems and achievements can be seen by everyone at the earliest possible time.

## 9. Multi-project Communication Management

8 automates the following for project and program communications:

- Automatic Alerts & Notifications
- Automatic generation & delivery of Weekly Status Report
- Real-time Chat
- Discussion forum
- Reality Check



**8** supports Iterative Reviews & Acceptance of deliverables to support the short iteration needs in communication for complex problem-solving. **8** also facilitates Structured Interactions and provides real-time information, allowing teams to make informed decisions.

The most powerful communication tool in **8** is its Data Agility & Preciseness that help projects and programs tremendously reduce miscommunications and enhance teamwork & effectiveness.

## 10. Multi-project Resource Management

**8** provides features for searching, requesting, allocating and tracking of resources in multiple sites, groups, activities, projects and programs. **8** also provides advanced resource management features such as program-defined resource roles and resource leveling.

**8** resource management features include:

- Automated resource search across sites & groups based on skill & availability
- Facilitating & tracking of resource provision, allocation & utilization
- Resource allocation automates cost estimating & budgeting
- Comparison of resource planned vs. actual utilization
- Automatic detection of overloaded & inadequate resources



8 also provides rich resource planning and utilization reports so that you can analyze resource provisioned vs. allocated vs. actual at deliverable, activity, project and program levels over time.

## 11. Multi-project Risk Management

8 automatically detects **Systemic** schedule, cost, resource and quality **Risks** and their impacts and extrapolates the ultimate impacts from existing impacts so that people can see the severity of the damages if the risks aren't properly managed.

8 also provides an integrated **Risk Register** for recording user-identified risks and tracking them from start to closure. In Risk Register, each risk is classified and evaluated from low to high chance of happening and from low to high impact before and after the identified actions are taken so that people can easily assess the effectiveness of their **Risk Medication** actions.

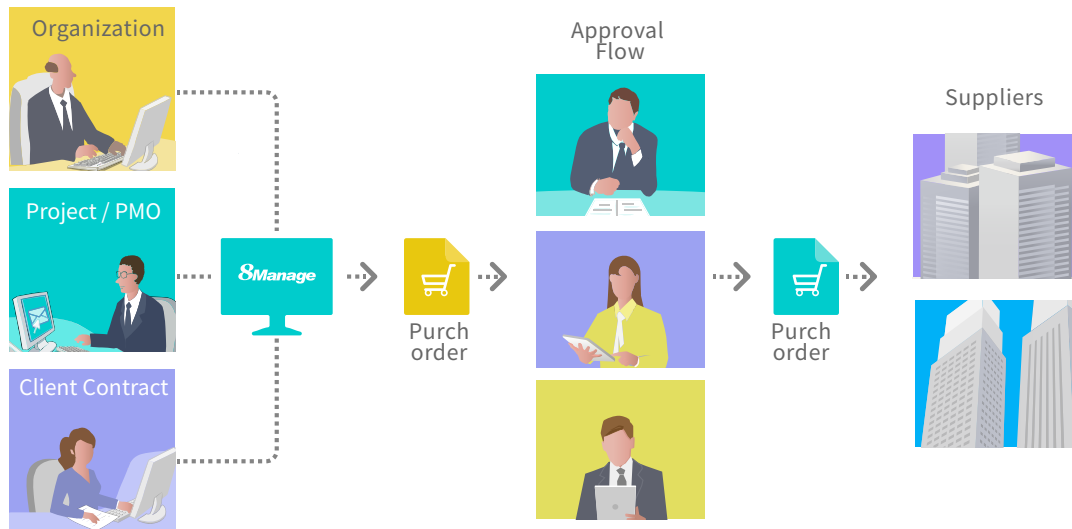


All risk information will be automatically aggregated from project-level to program-level in real-time.

## 12. Multi-project Procurement Management

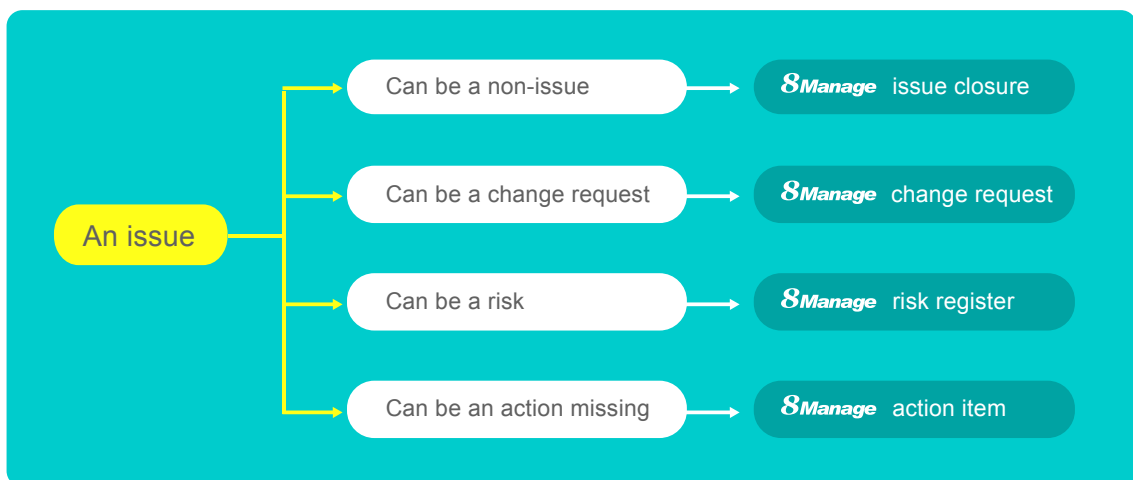
8 supports [e-Supplier Management](#), [e-Tender](#) and [e-Procurement](#) at activity, project and program levels. The tendering process is rule-driven and its security and integrity are well controlled by the system. For procurement, 8 supports PR, PO, and invoice and payment management. It also supports procurement contracting, subcontracting and outsourcing.

8 also supports [Project or Program-based Procurement](#). A gigantic or complex procurement task can be a project with multiple procurement activities of various types. Procurement information will be aggregated according to the project WBS structure and schedule, resource and dependency can be managed using project and program management discipline.



## 13. Multi-Project Issue Management

8 supports raising, assigning, acting, tracking, escalating and closure of issues at activity, project and program levels and allows the linkages of issues to risks, change requests and actions. 8 provides [Issue Map](#) to allow the user to walk through the linkages surrounding issues. Escalated issues will be marked in **RED** and the person(s) that the issue is escalated to must acknowledge the escalation. Issues raised in lower level activities are automatically aggregated up to their upper level activities, project and program.



# 14. Multi-project Change Management

8 provides Change Request to allow the user to record and manage changes.

Each Change Request contains the following information:

- Discovered In
- Plan
- Work Order
- Resolution
- Impact

Each Change Request can be in one of the following states:

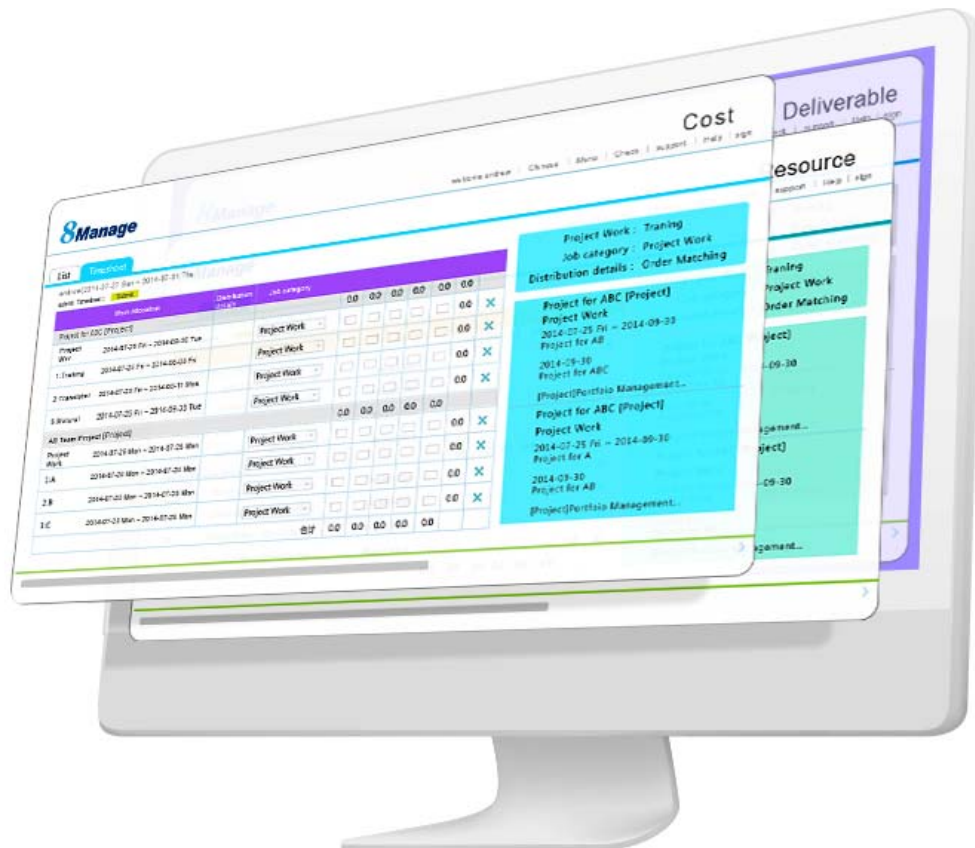
- Assigned
- Accepted responsibility
- Submitted proposal
- Submitted resolution
- Accepted resolution
- Closed

Name	Duration	Scheduled SD	Scheduled FD	Predecessor
HE 0Hercules	679d	2010-02-23 Tu	2010-09-08 F	
1 Requirements	335d	2010-02-23 Tu	2010-06-06 M	
10 Design	143d	2010-04-26 Tu	2011-11-10 Th	9-30d
13 Construction	125d	2011-09-09 F	2010-03-01 Th	12-45d
20 System Testing	90d	2011-12-30 F	2012-05-03 Th	13-45d
21 Integration Testing	1d	2011-12-30 F	2011-12-30 F	
22 Feature Testing	60d	2011-12-30 F	2010-03-22 Th	21-10d
23 Performance Security Configur	56d	2012-02-13 M	2012-05-03 Th	22F+30d
24 Beta Testing	86d	2012-05-04 F	2012-08-31 F	20
25 Final Evaluation & Product Announss	20d	2012-09-03 M	2012-09-28 F	24

A **Change Request** can be applied for change information logging during the project. WBS is being changed and the change impact information will be associated with the Change Request permanently. When people need to find out the change impacts of a particular Change Request or set of **Change Requests**, they can enter the Change Request number(s) to the system and the system will provide the change impact information. All Change Requests are automatically aggregated from project-level to program-level in real-time.



## 15. Multi-project Real-time Monitoring & Tracking

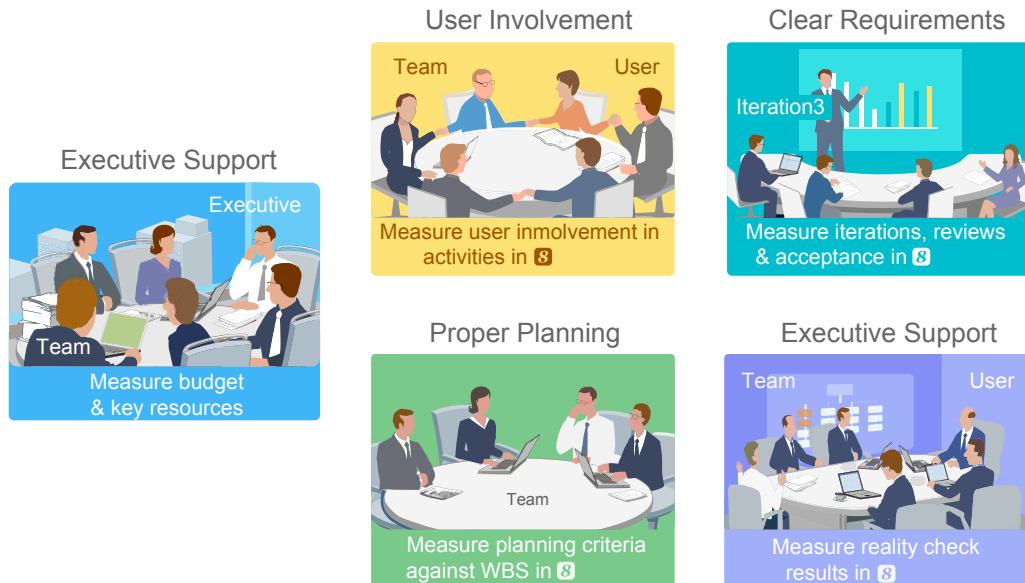


**8** provides the following dashboards for communicating status, identifying problems and tracking necessary actions:

- Overall
- Cost
- Phase Info
- Resource
- Dependency
- Deliverable
- Risk
- Change Request
- Reality Check
- Key Measure & Comparison

**8** provides both the individual project view and aggregated program view for each of the real-time dashboards mentioned above.

# 16. Multi-Project Critical Success Factors (CSF) Management



The designers of 8 understood the importance of the intangible factors that affect project and program success tremendously and designed built-in functionality in 8 for managing these critical success factors (CSF). The built-in functionality will help project and program managers to understand where they are falling short on the important but sometimes not very easy to detect factors.

8 allows project and program managers to select the critical success factors suitable for their environment. 8 also intelligently consolidates the top factors for success and the top factors for failure so that the program and project managers will only need to concentrate to deal with only a few key factors. For example, 8 can consolidate below to come only 5 factors that will need attention most:

### Top 5 Factors for Success :

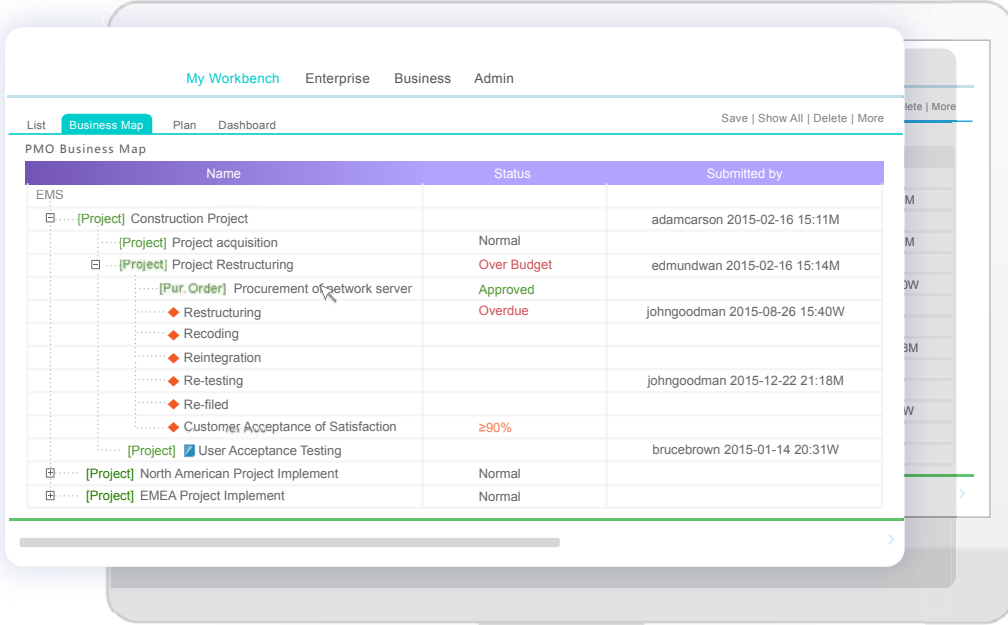
- User involvement
- Executive support
- Clear statement of requirements
- Proper planning
- Realistic expectations

### Top 10 Factors for Failure :

- Incomplete requirements
- Lack of user involvement
- Lack of resources
- Unrealistic expectations
- Lack of executive support
- Changing requirements & specs
- Lack of planning
- Didn't Lack of IT management
- Lack of IT management
- Technical incompetence

The key for **8** managing the few important factors effectively is knowing how to measure these factors which are hard to measure. The measurement will help the program and project managers to see where they are falling short and can utilize their knowledge of the environment and problem-solving skills to enhance the situation. Without the measurement, most of the time program and project managers aren't even aware of the fact that they are falling short in some of the important areas.

## 17. Multi-Project Business Map (OGSM)



The screenshot shows a web application interface for a PMO Business Map. The interface includes a navigation bar with 'My Workbench', 'Enterprise', 'Business', and 'Admin'. Below the navigation bar, there are tabs for 'List', 'Business Map', 'Plan', and 'Dashboard'. The main content area displays a table titled 'PMO Business Map' with columns for 'Name', 'Status', and 'Submitted by'. The table lists various projects and tasks, including 'Construction Project', 'Project acquisition', 'Project Restructuring', 'Procurement of network server', and 'User Acceptance Testing'. The status of these items varies, with some marked as 'Over Budget' or 'Overdue'.

Name	Status	Submitted by
[Project] Construction Project		adamcarson 2015-02-16 15:11M
[Project] Project acquisition	Normal	
[Project] Project Restructuring	Over Budget	edmundwan 2015-02-16 15:14M
[Pur. Order] Procurement of network server	Approved	
◆ Restructuring	Overdue	johngoodman 2015-08-26 15:40W
◆ Recoding		
◆ Reintegration		
◆ Re-testing		johngoodman 2015-12-22 21:18M
◆ Re-filed		
◆ Customer Acceptance of Satisfaction	≥90%	
[Project] User Acceptance Testing		brucebrown 2015-01-14 20:31W
[Project] North American Project Implement	Normal	
[Project] EMEA Project Implement	Normal	

**8** provides the **Business Map** to allow the program manager to monitor all the projects in her program on 1 screen. Business Map also allows the executive to view all programs and projects in the entire enterprise on 1 screen. The information reflected on the business map is aggregated from the lowest level transactions (e.g., request, deliver, accept) to the highest level in real-time and therefore the information is not only instantaneous, but can be drilled down in real-time for details. Using **8**, the deliverables can only be completed/accepted on the **8** platform, therefore, the information reflected in **Business Map** is **accurate, precise and agile**.

**Business Map** allows the top of the organization to understand the middle and lowest parts of the organization and also provides the visibility for the middle and lowest parts to shine though with their good performance. The clear, instantaneous and reliable information is to keep people honest so that everyone would be focusing on problem-solving and producing rather than politicking.



In combination with 8's other add-on modules, the PMO Business Map can become the **Enterprise Business Map** which allows executives to monitor the performance of various business portfolios and projects in the enterprise. The change after the add-on isn't the basic functionality of the business map but the orientation is toward specific business.

Like the PMO Business Map, the **Enterprise Business Map** allows the top of the organization to understand the middle and lowest parts of the organization and also provides the visibility for the middle and lowest parts to shine though with their good performance. The clear, instantaneous and reliable information is to keep people honest so that everyone would be focusing on problem-solving and producing rather than politicking.

# PMO Feature list

Feature	Description
<b>Project Request</b>	
Create Project Request	Record project name, project type, requested budget and other info in project requests.
Risk Assessment	Support risk assessment for project requests.
Approval	Support to submit project requests for approval.
Linked to a Project	Support to link an approved project request with a project.
<b>Project Initialization</b>	
Create Project	Allow to create project by different methods, such as creating from the template, importing from mpp file, creating from scratch or copying an existing project.
Define Project Team	Allow to define project planners, project sponsors, project supervisors, managers, project assistants and approvers and grant appropriate privileges.
Define Project Chapter	Allow to define info such as objectives, stakeholders, assumptions, approaches, high-level scope, high-level schedule and budget ballpark in project charter.
Project Scope Document Mgmt	Support the uploading and easy access of scope-related documents.
Project Library	Support user-define library template for creating a new project library.
	Support auto creation of project library automatically when a new project is created.
	Support linkages of project deliverables to documents in project library so that documents created from a project can be accessed independently from project library.
	Support knowledge mgmt in project library.
<b>Project Planning</b>	
<b>Detailed Project WBS</b>	
WBS Operation	The form of 8thManage WBS is similar to Excel format, in which users can re-arrange the activity sequence, outdent or indent an activity by mouse or shortcuts. The system also supports the import and export of MS project files.
Assign Activity Reps.	Able to assign the responsible person of the activities individually or by bulk replace;
	Allow multiple persons to be responsible for the same activity.
Set Up Deliverables	Allow to define deliverables details of activities/projects, including responsible person, scheduled FD, review and acceptance flow, quality standard etc.
Planning Methods	Support "top-down" and "bottom-up" planning methods; by combination of the two methods, it can better ensure the time restriction as well as the flexibility.
Sub-projects	A project can be inserted as an activity to another project's WBS.
Critical Path	Critical path activities are visually displayed on WBS and 8thManage supports showing real-time critical path on web page and exporting PDF document.
Gantt Chart	Able to show the Gantt Chart in real-time and allow exporting it into PDF.
Baseline	Support the establishment of baselines for projects and individual activities.
<b>Resource Plan</b>	
Resource Type	Allow self-defining the resource type such as internal human resources, external human resources, and non-human resources for the projects; allow self-defining the resources properties.

Resource Working Calendar	Allow defining different working calendars; each project and each resource can have different working calendars.
Key Resource Warning	Conflict or overloading of key resources will be alerted.
External Human Resources	Able to manage the external human resources that participate in the projects.
Resource Skills	Able to self-define needed fields to record all the skills of the resources.
Resource Plotter	The system will list the matched resources that meet the requirements based on resource plotter.
Resource Workload Warning	The workload of a resource can be tracked during resource planning process and any overload can be detected and alerted by the system automatically.
Resource Allocation	Support resource tracking and adjustment request on resource allocation according to the resource's usage.
<b>Deliverable Plan &amp; Quality Definition</b>	
Deliverable Review & Acceptance	Allow to define different review and acceptance flow for deliverables.
Minimum Quality Requirement of Deliverables	Support setting the minimum level of quality control for deliverables on Enterprise/PMO/Project level.
Minimum Quality Requirement of Milestones	Support setting the minimum level of quality control for milestones on Enterprise/PMO/Project level.
Deliverable Completion Methods	Allow to set up metrics to evaluate the quality of the deliverables;
	Support to set up the calculate methods of the completion rate according to the target value and the actual value of the metrics, or according to the review and acceptance status.
<b>Project Budget Plan</b>	
Approved Budget + Additional Forecast & Actual+Accrual	"Approved Budget + Additional Forecast" reflects the approved amount and the estimated amount acknowledged by the executives; "Actual+Accrual" reflects the actual amount and the amount estimated by the project team members. Their differences can provide overrun warnings.
Cost Control Rules	Allow to control the project cost in different cost classification levels and set up conditions when projects or cost should be (re)approved.
Cost Classifications	Allow to self-define different cost classifications by enterprise level, PMO level or by each project.
Reserve Fund	Support managing the reserve fund of the project.
Asset Depreciation	Support managing the asset depreciation of the project.
<b>Project Approval</b>	
Multi-level Approval	Support multi-level approval function (e.g. allow project manager to approve top-level activities, project approvers to approve whole project plans).
Self-defined Approval Flow	Project approval flow can be pre-defined in the system or confirmed by the project manager when the project is submitted for approval.
Re-approval Restriction	Allow to define there-approval control parameters; when some critical goal was changed, such as the cost, scheduled FD etc., the system will require the project to be re-approved automatically.
<b>Project Execution</b>	
<b>Deliverable Mgmt</b>	
Internal Review	Deliverable's responsible person submits the deliverable for internal review; Reviewer reviews the deliverable.
Acceptance	The accepter can accept or reject the deliverables after receiving the deliverables.
Commitment Mgmt.	Allow the commitment management of the deliverables; the commitment process includes commitment-implementation/re-negotiation/commitment breaking.



Deliverable Structure	Allow to define deliverable structure through defining the components of deliverables.
Deliverable Completion Feedback	Allow setting up target value of the metrics to evaluate the deliverables.
	The responsible can update the actual value, and the system will calculate the completion rate according to the target value and the actual value of the metrics, or according to the review and acceptance status.
<b>Resource Utilization</b>	
Timesheet	Team members can use the timesheet to record their actual working hours in each project.
Resource Request & Approval	Support the resource request and approval process.
Resource Usage Record	Able to generate the usage records automatically according to the actual timesheet records, able to calculate the project resource costs automatically.
Resource Tracking	Resource tacking feature supports dynamically tracing the resource usage in a project and detecting any overload and resource conflict.
Commitment Mgmt.	Allow the commitment management of the resource allocations; the commitment process includes commitment-implementation/re-negotiation/commitment breaking.
<b>Cost Mgmt</b>	
Expense	The system supports the expense flow management from request to payment delivery.
Cost Classifications	The project can inherit the cost classifications of enterprise, or adjust the inherited classifications to maintain its own one.
Budget & Actual Cost	Able to track the derivations between the planned budget and the real cost; able to provide warnings according to the pre-set cost warning rules.
<b>Communication Mgmt</b>	
Requests & Responses (Approval, Review, Acceptance)	When the user raises a request, the user being requested (such as the approver) will be able to receive and respond to it to achieve the purpose of interactions.
Notifications	When the plans are modified, or deliverables are reverted etc., the system will send out notifications automatically (the rules can be self-defined by the user).
	The system will also send out notifications to the responsible persons before the due day.
Escalations	Support to escalate to the leaders automatically if the pending requests are not being handled in due time.
Chat & Forum	Provide online chats and forums for instant communications.
Instant Comments & Emails	Allow team members to add comments for the projects, activities, deliverables, issues etc. online or via email at the same time.
	All the communications including the emails will be captured into the system by time sequences.
	Relevant team members will be able to keep track of the historical communication records when needed.
<b>Change Request Mgmt</b>	
Change Request	Allow users to record and handle the change request in the system.
Severity & Urgency Queue	Allow to define the severity of the change requests, provide urgency queue function to manage the change requests and to control the access rights.
Audit Trail	Provide audit trail to record all the changes of the change requests.
Self-define Function	Allow privileged user to self-define the basic information page and management flow of the CR.

<b>Purchasing Mgmt</b>	
Purchase Order	Support the entire procurement process, including raising the PO for approval, record the invoices received from the suppliers, payment requests and approval etc.
Received Invoice	
Payment Request	
<b>Requirement Mgmt</b>	
Requirement	Allow users to record and handle project and product requirements in the system.
Severity & Urgency Queue	Allow to define the severity of the requirements, provide urgency queue function for requirement management and to control the access rights.
Audit Trail	Provide audit trail to record all the changes of the requirements.
<b>Test Case Mgmt</b>	
Test Case	Allow users to record and handle test cases and upload related test files.
<b>Team Building</b>	
Project Work Performance Report	Provide various real-time project analysis reports as a reference during the executions, such as workload summary, quality summary, milestone completion status summary etc.
Reality Checks	Provide reality check functions to collect the comments from the project stakeholders and allow to answer the questions anonymously.
<b>Project Monitoring</b>	
<b>Cost Monitoring</b>	
Earned Value	Use the EVM management method recommended by the PMBOK to monitor the project cost
Top-down & Bottom-up Budget Deviations	The system will monitor the deviations between the top-down and bottom-up budgets and by real-time.
Cost Overrun	The system will monitor the cost overrunning the approved budget in real-time automatically.
Budget Re-approval	With pre-set rules, when budget being modified, it will trigger the restriction to re-approve the project.
<b>Progress Monitoring</b>	
Dashboard & Warning	Provide project summary dashboard and the alert functions.
Earned Value	Use the EVM management method recommended by the PMBOK to monitor the project schedule.
<b>Quality Monitoring</b>	
Quality Monitoring	The system will keep track of the project quality dynamically by examining the following: uncommitted deliverables, overdue deliverables, deliverables without review and acceptance, rejected deliverables, deliverables with a high rejection rate, the most overdue deliverable etc.
<b>Resource Monitoring</b>	
Resource Overall Monitoring	The system will automatically monitor the overall resource conditions, including overdue resources, unreasonable allocations, overloaded resources, to-be-hired resources, un-committed resources etc.
Resource Effort Analysis Histogram	The system provides resource effort analysis histogram to analyze the total FTE, resource days or resource hours of the planned, requested, approved or actual resources usage.
Resource Effort Analysis Table	The system provide the analysis report to view and compare the FTE, resource days, resource hours of the total resource usage, the resource constraint and the variances.
Different Resource Reports	The system provides different resource reports to help monitoring the resource in different dimensions, e.g. the resource planning report, resource time & cost report, resource allocation & utilization report etc.

<b>Risks &amp; Issue Monitoring</b>	
Risk Detection	Auto detection of the resource risk, schedule risk, cost risk, management risk etc. and demonstrates the risks in the project dashboard.
Risk Mgmt.	Besides from the auto detection of the risk, the system also allows the user to record and monitor the risks found.
	The system supports to plan actions to deal with, reduce or avoid the risk, and supports the whole follow-up process until the risk is relieved or closed.
Issue Handling	Support to keep track of the whole process of dealing with the issues found; including the issue registration, the impact analysis, the actions, actions follow-ups, issues solved and closed.
<b>Library &amp; Knowledge Classifications Mgmt</b>	
<b>Document Library Mgmt</b>	
Library Template	Support the creation of document library templates and the creation of document libraries based on a particular template.
Auto-creation of Project Library	Support creating a new document library automatically when a new project is created. It also supports creating a project document library from template.
Document Version	Provide document version management, able to keep track of all the historical versions.
Access Rights Control	Allow different stakeholders and users to have different access rights; able to grant the rights by library, by specific folders or specific documents.
	Provide check-in and check-out controls to avoid concurrent write into the same version of the document.
	All the view, modification, download, check-out actions etc. will be recorded in the access logs.
Document Searching	Allow to search and view the documents by names, knowledge classifications, key words or full-text;
	Allow to search and track documents of different formats including word, excel, ppt, pdf., etc.
Document Flow	Support user-defined document forms and allows the current user to fill in and submit documents of different types for approval.
Full-text Search Dictionary	Support user-defined full-text search rule.
<b>Knowledge Classification Mgmt</b>	
Knowledge Classification	Allow the user to self-define knowledge classifications.
Document Searching	Allow the linkage of each document to multiple knowledge areas and provides a knowledge-based search facility.
Deliverable Searching	Allow the linkage of each deliverable to multiple knowledge areas and provides a powerful knowledge-based search facility.
<b>Configurations and Integration Mgmt. (SVN/CVS)</b>	
Configurations and Integration Mgmt.	Built-in function to integrate with SVN/CVS for instant usage.
<b>Risk &amp; Issue Mgmt</b>	
<b>Risk Management</b>	
Existing Risk Analysis	Support the identification of existing risks and the analysis of the confidence level of them before the project start.
Risk Mgmt.	The system allows project team members identify, assess, prioritize and record risks and the formulate actions for managing them. The system also records the probability and influence before and after the action to ensure the effectiveness of the actions.
Risk Detection and Reminding	Auto detection of project resource risks, schedule risks, cost risks and management risks and provides extrapolative forecasts to warn people on the systemic risks.

<b>Issue Mgmt</b>	
Issue Recording	Allow to record issue for different levels and objects, such as deliverable, activity, sub-project and project.
Issue Linkage	Allow an issue to be associated with a risk and its resolution actions associated with change requests.
Change Tracking	The system will track the impact changes of the issue.
Actions Tracking	The system will track the actions to solve the issue.
Issue Map & Warnings	Provide an real-time issue map for the monitoring and visibility purposes and a automatic alert function for the actions associated with issues.
<b>Re-forecast &amp; Investment Attention</b>	
<b>Re-forecasting Mgmt.</b>	
Schedule Re-forecasting	8thManage supports schedule re-forecasting based on Schedule Performance Index (SPI), present date and mandatory dependencies.
Resources (Efforts) Re-forecasting	Allow to re-forecast the resources (efforts) according to the re-forecasted schedule and the extra resources requests.
Cost Re-forecasting	Allow to re-forecast the cost budget according to the actual cost (AC) and the bottom-up budget cost.
<b>Investment Attention</b>	
Bubble	Present multi-dimensional view of projects in the form of bubbles, supporting analysis of projects, project requests pending approval, project requests and projects. Users can set the indicators represented by the horizontal axis, vertical axis, bubble size and bubble color. The main indicators include project type, priority, expected return on investment and risk (percentage of confidence in overcoming risk).
Rank	Support to view performance scoring for each project, including system scores calculated by the system based on the set project traffic light scores, as well as scores manually filled in by management.
<b>Bill of Material Mgmt</b>	
Bill of Material	Allow to record bills of material. Materials can be products defined or not defined in the Product List, can be selected from Major Material Category, or imported through Excel.
Material Cost & Quote	Support to record cost and quote of each material, and automatically calculate the total cost and the total quote.
Approval & Change Mgmt	Support the approval of the bill of materials, and the changed bill shall be re-approved.
Version	The approved bill of materials will automatically generate a version, and the two versions can be compared in terms of the material composition and costs.
Inventory Request	Allow to generate an inventory request from a bill of material.
Inventory Return	Allow to return materials to inventory.
Purchase Order	Allow to generate a purchase order from a bill of material.
<b>Project Close</b>	
Project Close	Support to complete and close the project in the system.
Deliverable Documents Mgmt.	Allow to move all the attachments of the deliverables into specific project folders in the project library.
Resources Release	Allow to release all the requested resources after closing the project.
Project Documents Mgmt.	Allow to move all the project documents into the project library for better managing and archiving.
<b>PMO</b>	
Add PMO	Allow to create PMO and submit for approval.

Create Project in PMO	Allow to create project in PMO including to add new project from template, from mpp file and choose from existing projects.
	Allow user to manage projects through PMO.
Set PMO Policy	Allow to set PMO policy including critical success factor, cost policy, project and PMO approval, policy, quality policy, resource policy, earned value, timesheet & resource, and reality check.
SLA & Measure	Allow to use Service Level Agreement(SLA) and add measure types in PMO
Project Supervision & Control	Allow to check project status, project scope and budget, project approval info: opportunity, stakeholder, critical success factor, schedule control, quality control, resource control, cost control, scope and change request, and value earned.
Issue & Risk Management	Allow to add PMO issues and PMO risk management.
Performance Evaluation	Allow to evaluate employee performance (trail resource, commitment, timesheet), project performance (critical success factor, project status trail),and PMO performance (SLA, SLA result).
PMO Dashboard	Allow to check cost, project phase, resource, deliverable, milestone, change request, issue, risk dashboard.
Cost	Allow to manage budge, purchase order, invoice received, payment and expense report.
<b>Virtual PMO</b>	
Create Virtual PMO	Allow to create virtual PMO.
Add Project	Allow to trail and supervise projects that scoped by user through virtual PMO.
Set Privilege	Allow to set privileges to view or modify virtual PMO.
Trail Project	Allow to trail and control projects that contain in virtual PMO.
Virtual PMO Dashboard	Allow to view cost, phase info, resource, deliverable, risk, schedule report, milestone, key measure and investment point.
Milestone	Allow to show milestone of project in virtual PMO.
Change Request	Allow to trail change request in virtual PMO.
Issue	Allow to trail issues in virtual PMO.
Resource	Allow to check resource in virtual PMO and trail skills and resource report of project.
Other	Allow to check issue, project scope, legal business, audit trail and search in virtual PMO.
<b>Opportunity/Strategy</b>	
Record Basic Info	Allow to record the basic info of opportunities/strategies, including objectives, ideas, focus, expected results and returns on investment.
Business Map	Support to break down opportunities/strategies into sub-opportunities/strategies, projects or purchase orders in the Business Map.
Project/Assignment/CR	Support to record projects, assignments and change requests related to the opportunities/strategies.
Cost	Allow to record intended investment, budget and expenditure, expense and other cost info.
Issue & Risk	Allow to record issues and risks of opportunities/strategies.
Dashboard	Allow to grasp the overall situation of cost, phase info, resource, deliverable, change request, risk, etc.
<b>Scrum Project Mgmt</b>	
Requirement & Story Point	Allow to handle ideas and requirements on the story book page, which includes recording responsible person and number of story points.

Sprint & Activity	Allow to record sprints and related activities and to add cover pictures for each activity.
Meeting	Allow to record meetings including planning, daily and retrospective meetings.
Progress Monitoring	Allow to check and update sprint progress by dragging activities from one status column to another.
Burn Down Chart	Allow to check three types of burn down charts.
Acceptance	Allow to check acceptance of activities, requirements and sprints.



**8** can provide best combination of standard products & redevelopment services for enterprise management and over 500 corporations in Asia are using our following modules on-premises or SaaS:

**8 CRM** : Corporate Client CRM and Consumer CRM

**8 Service** : Service Management

**8 SRM** : Supplier Management, e-Procurement and e-Tender

**8 PPM** : Project and Portfolio Management

**8 New Way** : Visual Agile and Lean

**8 Timesheet** : Resource Time and Cost Management

**8 EDMS** : Electronic Document Management System

**8 OA** : Office Automation

**8 HCM** : Human Capital Management

**8 All-in-one** : Enterprise Full Automation

**Wisage Technology Ltd.**

 [8Manage.com](http://8Manage.com)

 [info@wisagetech.com](mailto:info@wisagetech.com)

 +852-6065-1864